



Osier Street, London, E1

BUTLER & STAG



**Price Guide £450,000 - £475,000**  
**Nestled in the vibrant and historic East End of London, Osier Court stands as a testament to the elegance and charm of Art Deco-style architecture. This residential block, located in Stepney Green, offers a unique blend of style and modern convenience, making it a highly desirable place to live.**



## Leasehold

- Art Deco Style Apartment Block
- Two Doubles Bedrooms
- Stepney Green Tube Station A Moments Walk Away
- Mile End Park and Victoria Park Close By
- Private West Facing Balcony
- First Floor Apartment
- Stylish and Modern Interiors
- 640 Sq/Ft Internal Living Space

As you step inside this contemporary residence, the living area welcomes you with abundant natural light, creating a warm and inviting atmosphere. The kitchen boasts modern appliances, ample counter space, and stylish cabinetry. The apartment boasts a large private balcony, creating a fantastic outdoor extension to the main living area.

The apartment offers two generously sized bedrooms, each designed with comfort and relaxation in mind. The second bedroom is perfect for guests, a home office, or as a space for your hobbies. Completing the property is a modern bathroom, and ample storage space throughout.

Osier Court's prime location in Stepney Green offers numerous advantages with its proximity to Stepney Green Underground Station, served by the District and Hammersmith & City lines, ensures quick and easy access to Central London and beyond.

A wealth of local shops, restaurants, and cafes cater to all daily needs and culinary tastes.

Nearby green spaces like Stepney Green Park and Mile End Park offer residents opportunities for outdoor activities and relaxation.





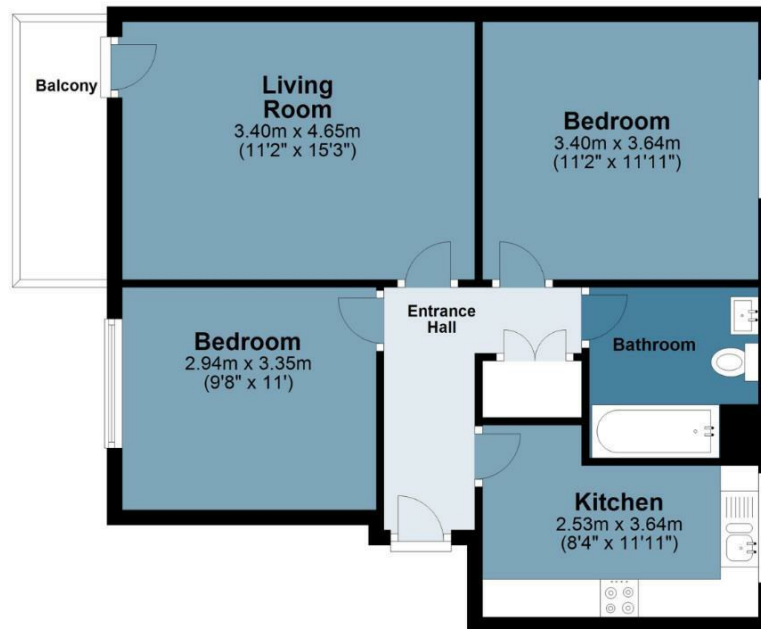
## Osier Court

Approx. Gross Internal Area 59.5 sq. metres (640.3sq. feet)

**BUTLER & STAG**

### First Floor

Approx. 59.5 sq. metres (640.3 sq. feet)



Measurements are approximate and for illustration purposes only. While we do not doubt the accuracy and completeness, we advise you conduct a careful independent assessment of the property to determine monetary value  
© @modephotouk www.modephoto.co.uk

**BUTLER & STAG**

☎ 020 8102 1236

🏠 508 Roman Road, Bow, London, E3 5LU

✉ bow@butlerandstag.com

[www.butlerandstag.uk](http://www.butlerandstag.uk)

IMPORTANT NOTICE - These particulars have been prepared in good faith and they are not intended to constitute part of an offer or contract. We have not performed a structural survey on this property and the services, appliances and specific fittings have not been tested. All photographs, measurements, floor plans and distances referred to are given as a guide and should not be relied upon.